



# *Transportation Priorities*

*Yakima County, Washington State*

# 2025



**CITY OF UNION GAP**  
*Regional Beltway Connector*

**CITY OF SELAH**  
*Fruity Pebbles*

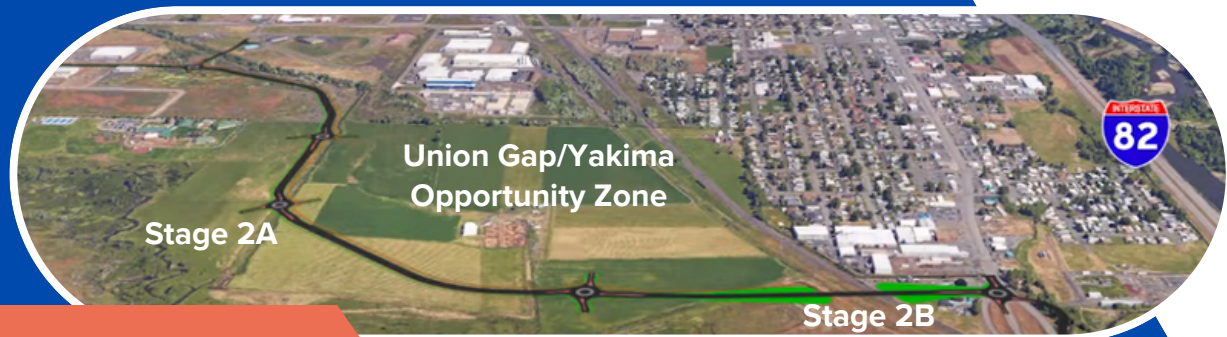
**WSDOT**  
*I-82 Yakima to Union Gap*



Visit Our Website

# About TRANS-Action

TRANS-Action advocates for urban investment in the Greater Yakima metropolitan area. This nonprofit is comprised of public agencies, local businesses, agricultural and tourism-based industries, elected officials and private citizens. Collectively, TRANS-Action serves as one voice advocating transportation services and infrastructure in upper Yakima County.



## City of Union Gap Regional Beltway Connector

### Project Cost for Stage 2B

Total Project Cost \$23,350,000

Freight Mobility Strategic Investment Board	\$2,687,000
Surface Transportation Block Grant	\$1,623,705
Congestion Mitigation and Air Quality	\$1,196,225

Stage 2A Complete!  
Project Cost \$11,540,000

**Unfunded \$17,843,070**

The City of Union Gap is seeking \$17,843,070 for the final phase of the Regional Beltway Connector Stage 2B. Stage 2A has been completed and the overall project design phase is fully funded. The Beltway is federally classified and eligible for federal funding. The National Environmental Policy Act (NEPA) requirements have been completed. A Categorical Exclusion for this project was approved by FHWA on June 22, 2022.

Stage 2B is the **last phase of a multi component corridor project** that connects the Yakima Air Terminal via Ahtanum Road to the newly improved South Union Gap I-82/US97 Interchange. The beltway will allow freight traffic unimpeded access around the downtown core, from I-82/US97 to westerly destinations. Vehicle, pedestrian, railway, and school zone safety will be greatly improved.

**Quality of life** is enhanced by providing the only pedestrian access to the 234-acre Fullbright Park and Museum. **Communities are connected** by adding 1.2 miles of 12' wide offset pathways creating a trailhead to the proposed Yakama Nation's Heritage Connectivity Trails system ensuring active transportation opportunities for all.

### Questions?

Jason Cavanaugh, CBO | Director of Public Works and Community Development  
City of Union Gap  
jason.cavanaugh@uniongapwa.gov | 509.249.9206

# City of Selah

## Naches Avenue Extension

### “Fruity Pebbles”

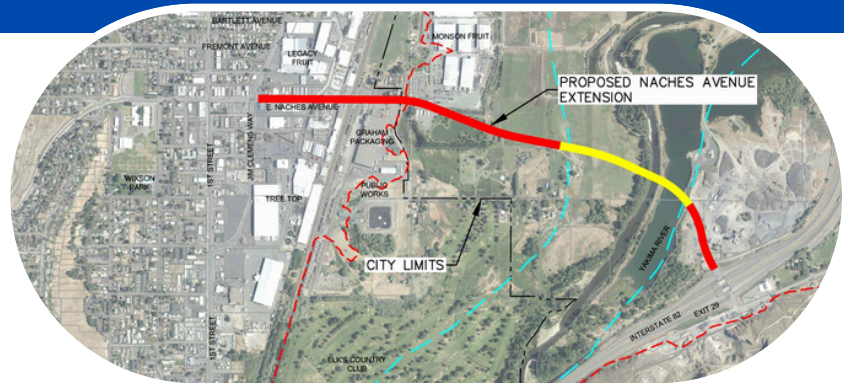
## Project Cost

Total Project Cost \$45,000,000

Funding Needed for Phase 1  
**\$800,000**

**BUILD GRANT 14343016**

Selah’s busy agricultural warehouse district lacks a **dedicated truck route** to and from I-82. Freight trucks currently use a northern interchange that links to a deficient bridge with weight restrictions and passes through school zones, or a southern interchange that links to the most accident-prone intersection in the area. Exit 29 on I-82 is a centrally located interchange that does not currently connect to Selah, is underutilized, and principally used by freight trucks for an industrial gravel operation (owned by Granite Construction Company). Selah’s Naches Avenue can be **extended to meet Exit 29**, thus creating a designated truck route and reducing congestion on Selah’s main roadways. Selah’s First Street is the second busiest route in all of Yakima County, averaging 34,000 daily trips including 2,700 daily freight truck trips. (The gravel operation and fruit warehouses led to the name “Fruity Pebbles.”)



### Questions?

Rocky Wallace | Public Works Director  
 City of Selah  
[rocky.wallace@selahwa.gov](mailto:rocky.wallace@selahwa.gov) | 509.698.7365



Early Concept

## WSDOT

### I-82 Yakima to Union Gap Corridor Improvements

## Project Cost

**\$73,300,000**

Interstate 82 in Yakima has become increasingly congested with heavy morning and afternoon rush hour traffic mixing with heavy truck traffic. Retail and commercial development in the greater Yakima area continues to add to freeway traffic. Replacing bridges and **improving connections** will increase the capacity on I-82 between the US 12 interchange and the SR 24/Nob Hill Blvd interchange. With related City of Yakima and Yakima County system improvements, congestion and **risk of collisions will be reduced.**

### Questions?

Randy Giles | Asst Region Administrator - Design and Program Management  
 WSDOT South Central Region  
[gilesr@wsdot.wa.gov](mailto:gilesr@wsdot.wa.gov) | 509.577.1626

# Thank You



509.759.9781



@DRYVETRANSAction



PO Box 1932  
Yakima, WA 98907

## Additional Projects of Importance

**WSDOT**  
*SR 24 - Corridor Enhancements*

**City of Yakima**  
*Yakima Air Terminal*

**City of Union Gap**  
*Main Street Revitalization*

