



Transportation Priorities

Yakima County, Washington State

2024



CITY OF UNION GAP

Regional Beltway Connector

CITY OF SELAH

Fruity Pebbles

WSDOT

I-82 Yakima to Union Gap



Visit Our Website

About TRANS-Action

TRANS-Action advocates for urban investment in the Greater Yakima metropolitan area. This nonprofit is comprised of public agencies, local businesses, agricultural and tourism-based industries, elected officials and private citizens. Collectively, TRANS-Action serves as one voice advocating transportation services and infrastructure in upper Yakima County.



City of Union Gap Regional Beltway Connector

Project Cost for Stage 2B

Total Project Cost \$22,236,800

National Highway Freight Program \$619,800
Congestion Mitigation and Air Quality \$500,000

\$21,117,000 Unfunded

RAISE GRANT 14083031

The City of Union Gap is seeking \$21,117,000 for the final phase of the Regional Beltway Connector Stage 2B. Funds will be utilized for right-of-way and construction activities, design phase is fully funded. The Beltway is federally classified and eligible for federal funding. The National Environmental Policy Act (NEPA) requirements have been completed. A Categorical Exclusion for this project was approved by FHWA on June 22, 2022.

Stage 2B is the **last phase of a multi component corridor project** that connects Ahtanum Road to the newly improved South Union Gap I-82/US97 Interchange. Once complete the Beltway allows freight traffic to route around the downtown commercial areas reducing truck traffic at the Union Gap K-8 School zone and the Ahtanum Road/BNSF Railway at-grade crossing.

Enhances **quality of life** by providing the only pedestrian access to the 234-acre Fullbright Park and Museum. **Connecting communities** by adding 1.2 miles of 12' wide offset pathways creating a trailhead to the proposed Yakama Nation's Heritage Connectivity Trails system so people can ride bikes or walk to their jobs, shop, visit family, or recreate safely.

Questions?

Dennis Henne | Public Works and Community Development Director
City of Union Gap
dennis.henne@uniongapwa.gov | 509.249.9206

City of Selah

Naches Avenue Extension

“Fruity Pebbles”

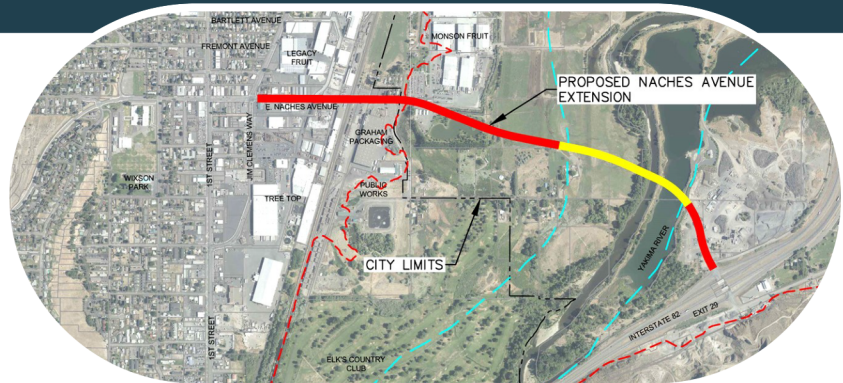
Project Cost

Total Project Cost \$45,000,000

Funding Needed for Phase 1
\$800,000

RAISE GRANT 14083699

Selah’s busy agricultural warehouse district lacks a **dedicated truck route** to and from I-82. Freight trucks currently use either a northern interchange that links to a deficient bridge with weight restrictions and passes through school zones, or a southern interchange that links to the most accident-prone intersection in the area. Exit 29 on I-82 is a centrally located interchange that does not currently connect to Selah, is underutilized, and principally used by freight trucks for an industrial gravel operation (owned by Granite Construction Company). Selah’s Naches Avenue can be **extended to meet Exit 29**, thus creating a designated truck route and reducing congestion on Selah’s main roadways. Selah’s First Street is the second busiest route in all of Yakima County, averaging 34,000 daily trips including 2,700 daily freight truck trips. (The gravel operation and fruit warehouses led to the name “Fruity Pebbles.”)



Questions?

Rocky Wallace | Public Works Director
 City of Selah
rocky.wallace@selahwa.gov | 509.698.7365



WSDOT

I-82 Yakima to Union Gap Corridor Improvements

Project Cost

\$73,300,000

Interstate 82 in Yakima has become increasingly congested with heavy morning and afternoon rush hour traffic mixing with heavy truck traffic. Retail and commercial development in the greater Yakima area continues to add to freeway traffic. Replacing bridges and **improving connections** will increase the capacity on I-82 between the US 12 interchange and the SR 24/Nob Hill Blvd interchange. With related City of Yakima and Yakima County system improvements, congestion and **risk of collisions will be reduced.**

Questions?

Randy Giles | Asst Region Administrator - Design and Program Management
 WSDOT South Central Region
gilesr@wsdot.wa.gov | 509.577.1626

Thank You



509.759.9781



@DRYVETRANSACTION



PO Box 1932
Yakima, WA 98907

Additional Projects of Importance

WSDOT
SR 24 - Corridor Enhancements

City of Yakima
Yakima Air Terminal

City of Union Gap
Main Street Revitalization

