
Joint DRYVE and TRANS-Action Committees Meeting Minutes

May 30, 2019, 2:00 p.m. to 4:00 p.m.

Meeting Location: WSDOT South Central Region Headquarters, 2809 Rudkin Road, Union Gap

WELCOME

Trent Marquis brought the meeting to order and welcomed all attendees. Everyone introduced themselves (see attached attendance sign-in sheet).

EXECUTIVE BOARD (TRANS-ACTION)

Approval of Minutes – John Hodgkinson moved to approve TRANS-Action’s March 28, 2019 meeting minutes. Mike Battle seconded the motion and it was approved unanimously.

Approval of Financial Report – Alan Adolf summarized TRANS-Action’s financial report (see attached financial report). Carmen Mendez moved to approve TRANS-Action’s financial report. John Hodgkinson seconded the motion and it was approved unanimously.

Transit Feasibility Study – Alan Adolf said YVCOG will receive \$50,000 from WSDOT for a planning grant to perform a Transit Feasibility Study. TRANS-Action had approved its current budget to provide \$1,000 of matching funds for this project. Dennis Henne moved to approve expenditures of \$1,000 towards this study. Todd Trepanier seconded the motion and it was approved unanimously.

EXECUTIVE BOARD (DRYVE)

Approval of Minutes – Ardele Steele moved to approve DRYVE’s March 28, 2019 meeting minutes. Cus Arteaga seconded the motion and it was approved unanimously.

Approval of Financial Report – Alan Adolf summarized DRYVE’s financial report (see attached financial report). Cus Arteaga moved to approve DRYVE’s financial report. Jon Smith seconded the motion and it was approved unanimously.

Transit Feasibility Study – Alan Adolf said YVCOG will receive \$50,000 from WSDOT for a planning grant to perform a Transit Feasibility Study. DRYVE had approved its current budget to provide \$1,000 of matching funds for this project. Jon Smith moved to approve expenditures of \$1,000 towards this study. Francisco Guerrero seconded the motion and it was approved unanimously.

OTHER STUDIES

Alan Adolf said the State is funding a passenger rail feasibility study for Stampede Pass.

Hollyanna Littlebull summarized the Yakama Nation’s pathway project they are requesting the National Park Service to fund planning technical assistance for (see attached summary). The goal is for safe passage for all persons. Jon Smith moved to approve a letter of support from TRANS-Action for this project. Carmen Mendez seconded the motion and it was approved unanimously. Jon Smith moved to approve a letter of support from DRYVE for this project. Gracie Sexton seconded the motion and it was approved unanimously.

FEDERAL LEGISLATIVE COMMENTS

No comments were available.

D. C. VISIT DEBRIEF

Members who traveled to D.C. thanked Sheila Black and Alan Adolf for their planning and preparation for this trip. Members who made the trip included Trent Marquis, Lance Hoyt, Carmen Mendez, Matt Pietrusiewicz, Mike Battle. They

felt it was a good experience, all meetings went well, and it was important to to keep TRANS-Action and DRYVE projects in the forefront.

SUBGROUP SELECTION

Bill Preston asked members to volunteer to participate in a subgroup.

IT - The IT subgroup was renamed Communications and Joan Davenport, Jon Smith, and Larry Mattson will participate on it. The purpose of it is to develop our digital presence. Jim Restucci will host a website.

Preservation – The purpose is to provide data and strategies on preservation needs, develop a timeline, and determine how to promote the need for preservation. The first step will be to discuss this need at YVCOG’s Technical Advisory Committee (TAC). Members on TAC will discuss it at the next TAC meeting.

Projects – The purpose is to develop data, strategies, and timeline for promoting projects supported by TRANS-Action and DRYVE. Matt Pietrusiewicz, Brian White, and Mike Battle will participate in the Projects subgroup.

Legislative - Carmen Mendez felt a fourth subgroup to discuss Legislative coordination should be created. Members decided to discuss this further at the next meeting.

AGENCY UPDATES

Members gave updates on their transportation projects.

CALENDAR OF EVENTS

No events discussed at this meeting.

NEXT MEETING

The next meeting is planned for July 26, 2019 at the WSDOT South Central Region’s Conference Room, Union Gap.

Adjourned at 4:00 PM

Hereby Submitted / Approved:

Trent Marquis, TRANS-Action Chair

Date Signed:

Lance Hoyt, DRYVE Chair

Date Signed:

Attest:

Jan Ollivier, TRANS-Action Secretary

Date Signed:



Choose an Account My Documents

I'd Like to...

View

- Account Information
- Full Account & Routing Number
- Online Statements

Take Action

- Set Up Account Alerts
- Set Up Automatic Transfer
- Set up Cards for Travel
- Deposit a Check
- Find Past Check or Deposit Slip Images
- Order/Review Checks
- Lost or Stolen Card/Check

Transfer Money

From Account

To Account

\$ mm/dd/yyyy

Pay a U.S. Bank Account

Pay Bills

Send Money with

Checking - 0923

[Add Nickname](#)

Account Summary

Available balance today, 9:43 a.m. **\$20,061.71**

Bills sneaking up on you?
Pay today with Express Delivery and avoid the late fee. [Learn more](#)

Account Activity

Transactions Search [Print Transactions](#) | [Download Transactions](#)

You searched for:

Transaction Type: All Transactions
Date: From 04/01/2019 to 05/29/2019
[Refine Search](#)

Showing 1 - 3 of 3 Results Per page 1 of 1

Date	Description	Check #	Deposits	Withdrawals
Completed Transactions				
05/20/2019	Check View Image	3327		\$494.00
05/14/2019	Check View Image	3325		\$46.00
04/01/2019	Electronic Withdrawal Deluxe Bus Sys.			\$20.00

Per page 1 of 1

Connection Secured

[Give Feedback](#) | [Privacy Pledge](#) | [Legal Agreements](#) | [CoBrowse](#)

© 2019 U.S. Bank
OLB KS-MEE 69 019.05.6017.1

For U.S. Bank:

Equal Housing Lender. Deposit products offered by U.S. Bank National Association. Member FDIC

U.S. Bank is not responsible for and does not guarantee the products, services or performance of U.S. Bancorp Investments.



Choose an Account My Documents

I'd Like to...

View

- Account Information
- Full Account & Routing Number
- Online Statements

Take Action

- Set Up Account Alerts
- Set Up Automatic Transfer
- Set up Cards for Travel
- Deposit a Check
- Find Past Check or Deposit Slip Images
- Order/Review Checks
- Lost or Stolen Card/Check

Transfer Money

From Account

To Account

\$ mm/dd/yyyy

Pay a U.S. Bank Account

Pay Bills

Send Money with

Checking - 7291

[Add Nickname](#)

Account Summary

Available balance today, 9:40 a.m. **\$34,469.45**

Avoid a late fee.
 In a pinch, Express Delivery can help you pay your bills on time. [Learn more](#)

Account Activity

Transactions Search [Print Transactions](#) | [Download Transactions](#)

Show The Past 90 days 30 Per page 1 of 1

Date	Description	Check #	Deposits	Withdrawals	Account Balance
Completed Transactions					
05/17/2019	Check View Image	2003		\$418.00	\$34,469.45
05/15/2019	Check View Image	2002		\$342.00	\$34,887.45
05/14/2019	Check View Image	2000		\$46.00	\$35,229.45
04/12/2019	Check View Image	1130		\$250.64	\$35,275.45
04/01/2019	Electronic Withdrawal Deluxe Bus Sys.			\$24.33	\$35,526.09
02/28/2019	Deposit View Image		\$1,000.00		\$35,550.42

30 Per page 1 of 1

Connection Secured

[Give Feedback](#) [Privacy Pledge](#) [Legal Agreements](#) [CoBrowse](#)

© 2019 U.S. Bank
 OLB: KS-MEE 6A 019.05.6017.1

For U.S. Bank:

Equal Housing Lender. Deposit products offered by U.S. Bank National Association. Member FDIC
 U.S. Bank is not responsible for and does not guarantee the products, services or performance of U.S. Bancorp Investments.



Application Guidelines & Form



About Us

The National Park Service – Rivers, Trails and Conservation Assistance program (RTCA) supports community-led natural resource conservation and outdoor recreation projects across the nation. Our conservation and recreation planning professionals partner with community groups, nonprofit organizations, tribes, and government agencies. This partnership assists local communities in realizing their conservation and outdoor recreation vision and goals by providing a broad range of services and skills. National Park Service (NPS) staff share their expertise to help your team turn an idea into reality. We offer this assistance on an annual basis with extensions based on mutual agreement. *No monetary grants are made.*

National Park Service Mission

The National Park Service preserves unimpaired the natural and cultural resources and values of the National Park System for the enjoyment, education, and inspiration of this and future generations. The Park Service cooperates with partners to extend the benefits of natural and cultural resource conservation and outdoor recreation throughout this country and the world.

Our Focus Areas

Our projects typically fall within five focus areas, although we consider other projects that fall outside of these categories:

- **Build healthy communities through parks, trails, and outdoor opportunities:**
Improve access to outdoor recreation and park amenities on land and water that support healthy lifestyles for all users
- **Conserve natural lands, rivers, and watersheds:**
Strengthen the conservation and stewardship of public lands, waterways, and wildlife habitat
- **Engage youth in outdoor recreation and stewardship:**
Connect young people to the outdoors to develop a lifelong appreciation of recreation and nature
- **Strengthen the organizational capacity of project partners:**
Develop and strengthen effective and sustainable community organizations and partner groups
- **Support National Park Service and community networks:**
Facilitate strategic planning and collaboration between national parks and communities to achieve shared goals



Our Services

Our assistance is tailored to your needs. Examples of the types of assistance we provide are listed below. Visit our website to learn about current projects: <https://www.nps.gov/orgs/rtca/community-projects.htm>

- Define project vision and goals
- Inventory and map community resources
- Identify and analyze key issues and opportunities
- Engage collaborative partners and stakeholders
- Design community outreach and participation strategies
- Develop concept plans for trails, parks, and natural areas
- Set priorities and build consensus
- Identify funding strategies
- Develop a sustainable organizational framework to support the project
- Create project management and strategic action plans
- Coach teams, groups, and partnership networks

Application Process and Timeline

Consulting a program manager prior to the application deadline is *a requirement* to help identify how our expertise can complement your project and to answer questions regarding the application. Please see the contact list at the end of this application to identify the program manager who serves your state.

- Application deadline: June 30
- Email completed applications to the program manager who serves your state or contact them for guidance on mailing a printed version (*see list at the end of the application*)
- Please include the following in your Application Package:
 1. Completed application form
 2. Site location map
 3. A minimum of three commitment letters that describe each partner's role, responsibility, and contribution to the project
 4. Optional supplemental information that can help us learn more about your project (for example, background documents, media coverage, additional maps, list of links to resources, project photos, etc.)
- Applicants will be notified of decisions by November 1.
- Project start times will be coordinated with applicants who have been selected for assistance.

Project Selection Criteria

Applications for support from the Rivers, Trails and Conservation Assistance program are competitively evaluated based on the following criteria:

- The project has specific goals and results for conservation and outdoor recreation expected in the near future.
- Roles and contributions of project partners are significant and well-defined.
- There is evidence of broad community support for the project.
- The project fits with our focus areas (although proposals falling outside these areas are considered).

Community Assistance

National Park Service
U.S. Department of the Interior
Rivers, Trails, and Conservation
Assistance Program



HELPING COMMUNITIES REALIZE THEIR VISION

The National Park Service Rivers, Trails, and Conservation Assistance program moves your community's ideas to action.

The National Park Service helps with community-led conservation and outdoor recreation projects by providing free planning support.

Supporting a diverse range of partners & projects.

The National Park Service Rivers, Trails, and Conservation Assistance (RTCA) program supports nonprofit organizations, community groups, tribes, and local, state, and federal government agencies. We help partners work together to create parks, develop trails and greenways, protect rivers and natural areas, and increase access to recreation opportunities. We help you engage a wide range of community partners and also work to connect you to National Park Service (NPS) managed areas.

The NPS helps you with projects that:

- Build healthy communities through parks, trails, and outdoor recreation
- Conserve natural lands, rivers, and watersheds
- Engage youth in outdoor recreation & stewardship
- Strengthen organizational capacity
- Develop partnerships & networks

Providing assistance tailored to your needs.

The NPS adapts best practices and draws upon our staff's project experience to support your needs. When a partner asks for assistance with a project, NPS staff provide free, on-site facilitation and technical expertise to guide your project from conception to completion.

The NPS does not provide project funding. Instead, we help you and your community locate and leverage public and private financial and technical support. The NPS also helps your community build strategic partnerships with diverse groups.



Visit www.nps.gov/RTCA for application information, program details, and your local contacts.

“The National Park Service preserves unimpaired the natural and cultural resources and values of the National Park System for the enjoyment, education, and inspiration of this and future generations. The Park Service cooperates with partners to extend the benefits of natural and cultural resource conservation and outdoor recreation throughout this country and the world.”

— The National Park Service Mission

Implementing the National Park Service mission across the United States.

The RTCA program helps carry out the National Park Service mission by supporting community-led outdoor recreation and conservation projects for the benefit of all Americans.



NPS staff work in urban, rural, & suburban communities

Hands-on, long-term support for you and your community.

NPS staff engage directly and frequently with partners like you to organize and carry out collaborative projects. On average, the NPS assists communities like yours with projects for one to three years. This hands-on, long-term approach is key to helping you build sustainable conservation and recreation strategies.



How the RTCA program turns ideas into action:

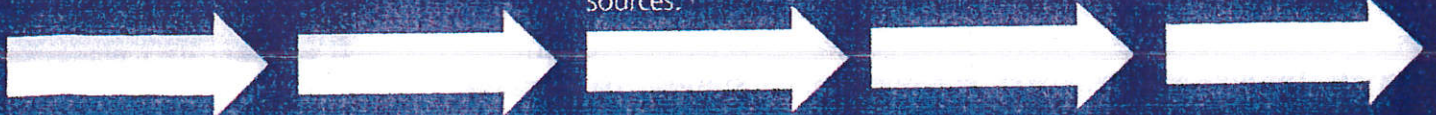
A community or organization has an idea and applies for project assistance.

NPS staff members consult with partners to clarify goals and community needs.

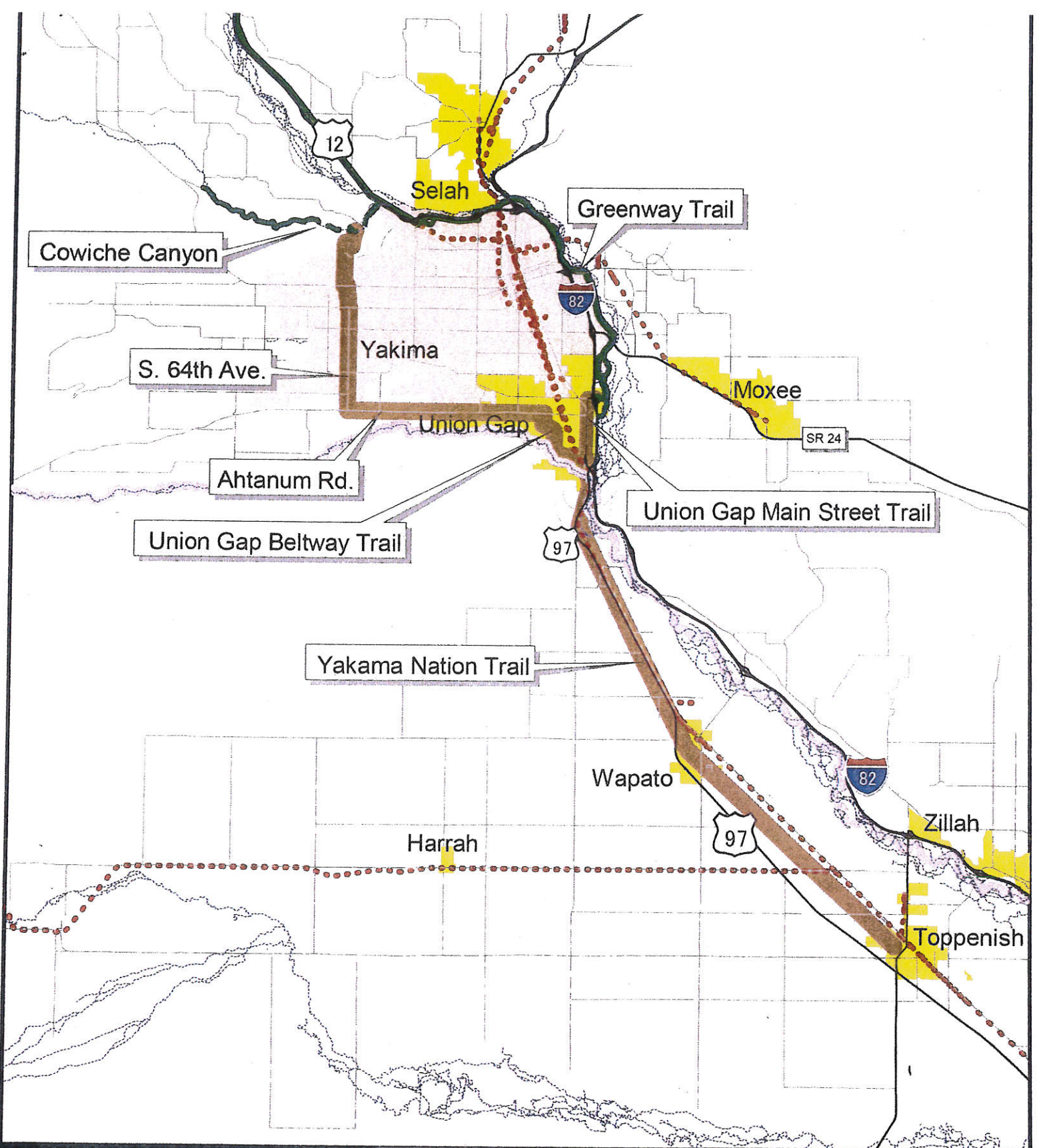
NPS staff help develop project strategies, identify additional partners, and locate funding sources.

NPS staff assist the community with ongoing planning and partnership development.

With defined priorities and commitments secured, implementation begins!



Visit www.nps.gov/RTCA for application information, program details, and your local contacts.



GEOGRAPHIC INFORMATION SERVICES

**Yakama-Yakima Valley
Heritage Trail Connectivity**

RTCA Application
June 30, 2019

YAKIMA COUNTY

 Yakama Nation Boundary

 Project's Proposed Trails

 Existing Trails

 Railroads

 Roads



Copyright (C) 2019 Yakima County
This map was derived from several databases.
The County cannot accept responsibility for any errors.
Therefore, there are no warranties for this product.
Plot date: May 28, 2019; appmap