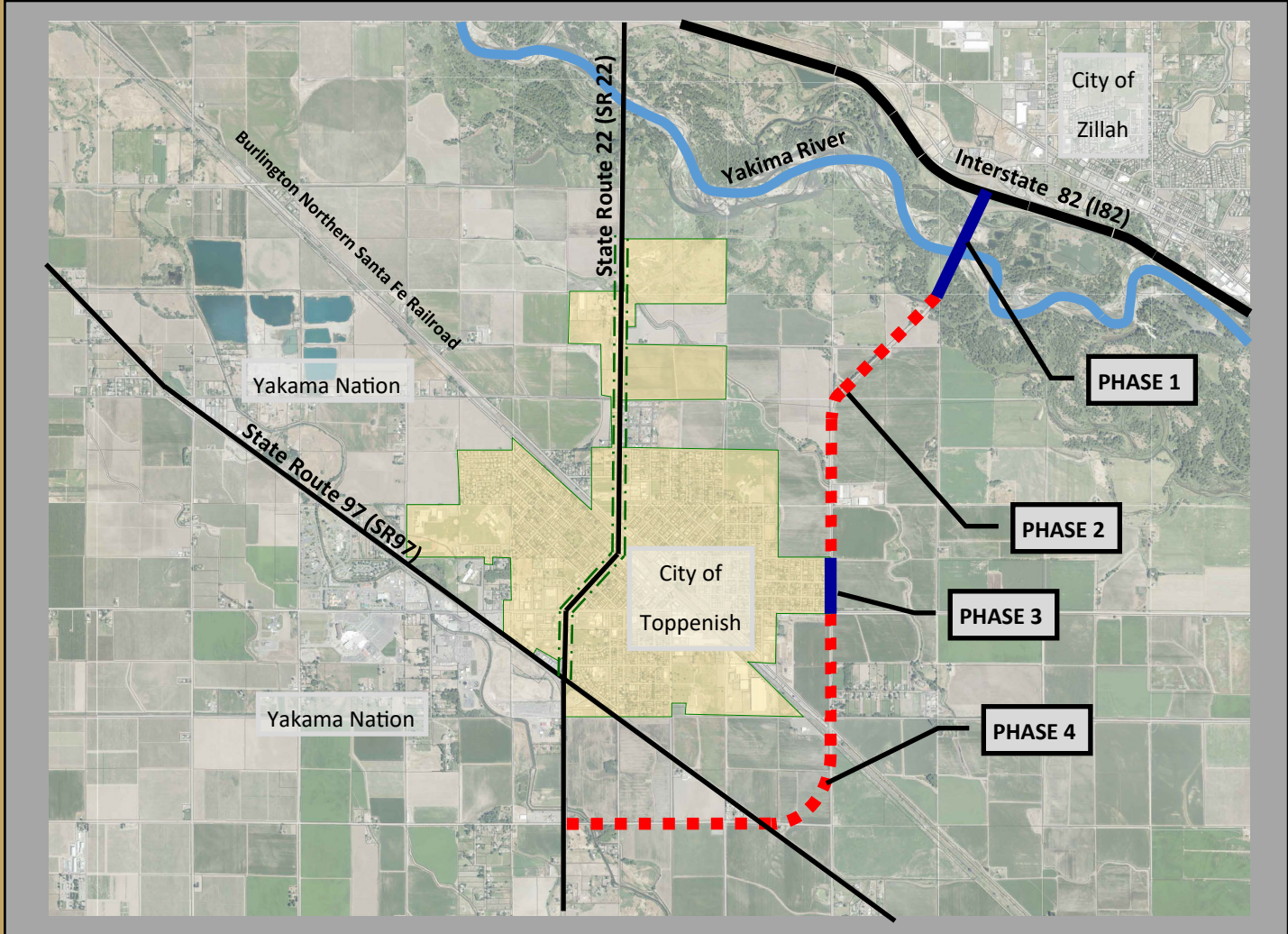




# City of Toppenish Interstate 82 / SR 97 Freight Express Route



### Project Goals:

- Remove freight traffic from the City core and business district to increase safety and reduce congestion and accidents on SR 22.
- Create "Express Link" between Interstate 82, SR 97, and SR 22 connecting the communities of Zillah, Toppenish, Yakama Nation, and out lying areas of Yakima County.
- Promote residential and industrial growth, and improve freight movement.

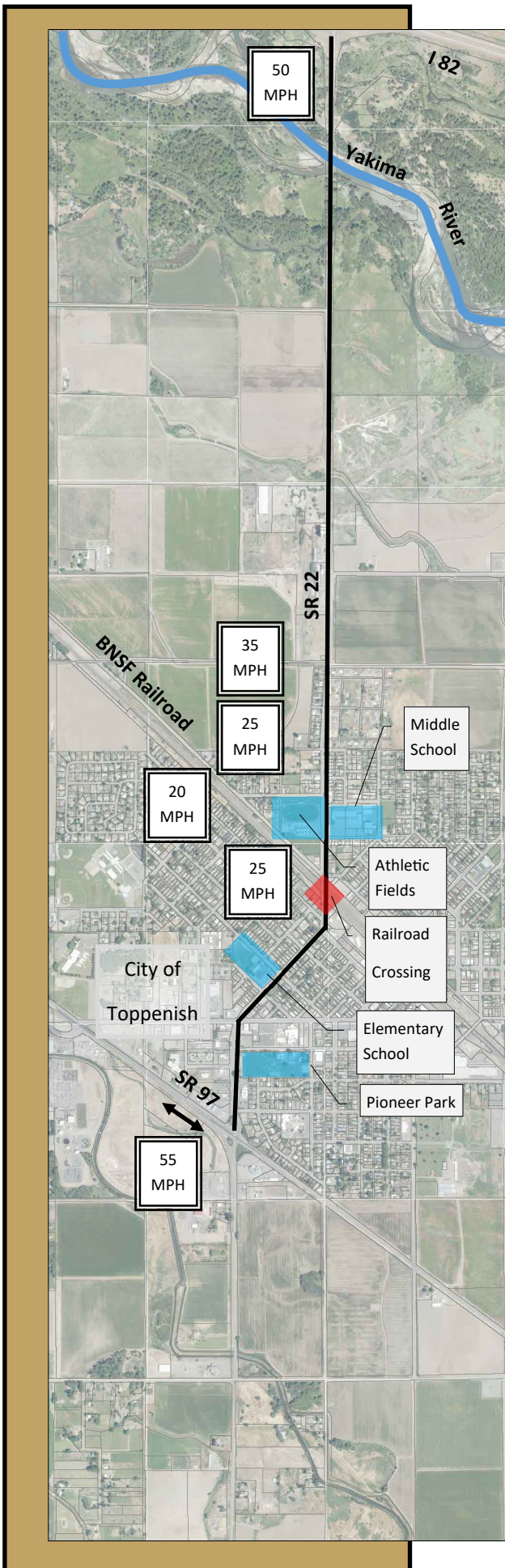
### Project Summary:

<b>Phase 1</b>	<b>\$ 12.7 Million</b>	<b>Completed 2019</b>
<b>Phase 2</b>	<b>\$ 2.4 Million</b>	<b>Not Secured</b>
<b>Phase 3</b>	<b>\$ 977,000</b>	<b>Completed 2014</b>
<b>Phase 4</b>	<b>\$ 10.2 Million</b>	<b>Not Secured</b>
<b>\$ 12.6 Million Funding Need</b>		

### For Additional Information Please Contact:

City of Toppenish  
Lance Hoyt, City Manager  
Phone No. (509) 865-6319  
Lance.Hoyt@cityoftoppenish.us





### Existing Conditions

- SR 22 is a locally controlled highway bisecting the City of Toppenish, a City with 9,000 people.
- SR 22 received in excess of **12,000 vehicles a day in 2018**. Of the 12,000 vehicles a day, approximately **8,000 vehicles are “passing through”** the City to either SR 97 (south) or I 82 (north).
- The speed limit north and south of the City is 50 MPH, and inside the City limits the speed limit is reduced to 25 MPH. There is also a school zone on SR 22 further reducing the speed limit to 20 MPH.
- With the frequent amount of traffic and the reduced speeds, **traffic congestion and accidents are common**. Between 2016 thru 2018, there were over 95 accidents reported on SR 22 within City Limits.

### Project Benefits

**Phase 1** constructed over 12 million dollars in bridge infrastructure improvements to replace load rated failing bridges. Phase 1 also increased the flood capacity across the Yakima River benefiting upstream and downstream river basins. These improvements were constructed by Yakima County.



**Phase 2** will reconstruct North Meyers Road widening the roadway and removing obstructions posing a safety hazard to motorists such as deep roadside canals and narrow short span bridges.

**Phase 3** constructed approximately 1 million dollars of road infrastructure improvements within the City of Toppenish through the Washington State Transportation Improvement Board to improve safety and widen the roadway for vehicle maneuverability.



**Phase 4** will reconstruct existing road infrastructure improving safety, and will construct a new grade separation over BNSF railway where none currently exist. This phase will also improve the intersection at SR 97.

