



Transportation Priorities

Yakima County, Washington State

2025



WSDOT

Heritage Connectivity Trails

WSDOT

US 97 Safety Corridor

CITY OF ZILLAH

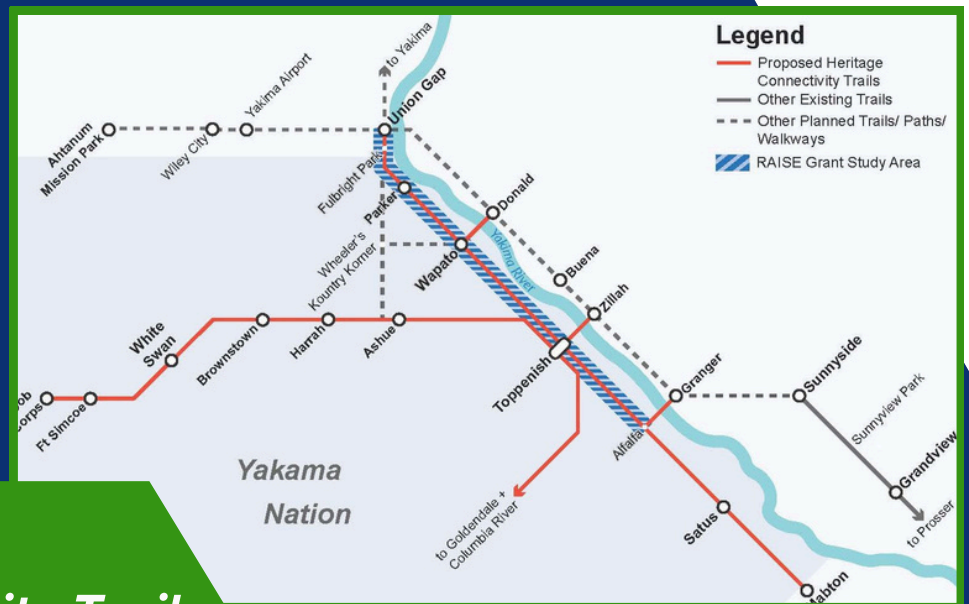
*Cheyne Road Widening
and Pedestrian Facilities*



Visit Our Website

About DRYVE

DRYVE addresses rural transportation needs in the lower Yakima Valley. This nonprofit is comprised of public agencies, local businesses, agricultural and tourism-based industries, elected officials and private citizens. Collectively, DRYVE serves as one voice advocating transportation services and infrastructure in lower Yakima County.



WSDOT Heritage Connectivity Trails (HCT)

Project Cost

Total Project Cost Unknown

Project segments would be developed in the \$2-5 million range

In partnership with the Yakama Nation, WSDOT was awarded a \$1 million federal RAISE grant for the first phase of the HCT project. Grant money will be used to complete a feasibility study, preliminary designs and environmental review for 23 miles of paths between Union Gap and Toppenish. The overall HCT project develops over 150 miles of paths from Union Gap to White Swan to Mabton. This project is important because it provides **safer alternatives** for travelers along US 97 which has higher pedestrian fatality rates in the state of Washington, **disproportionately impacting Native Americans.**

The HCT network is intended to connect to existing and planned pathways in the Upper Yakima Valley, including Union Gap's Beltway and the Yakima Greenway. This project would initially provide for the construction of high priority segments of the trail system.

Questions?

Randy Giles | Asst Region Administrator - Design and Program Management
WSDOT South Central Region
gilesr@wsdot.wa.gov | 509.577.1626

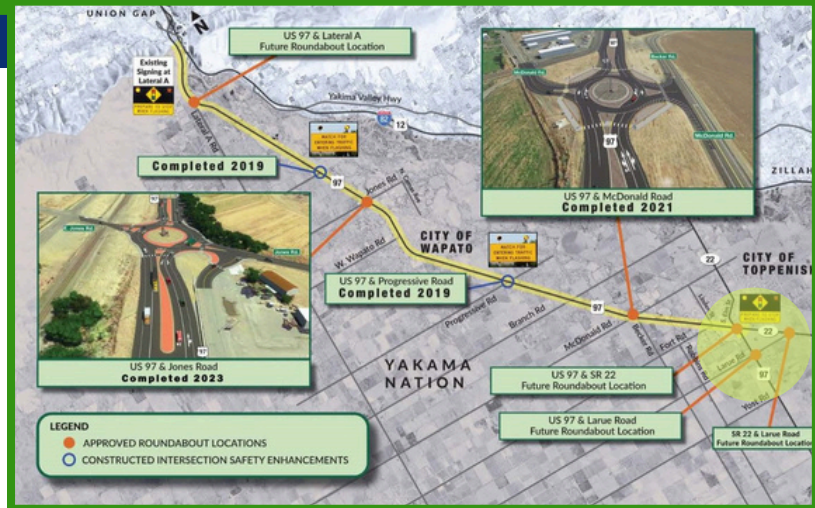
WSDOT

US 97 Safety Corridor

Project Cost

\$25,000,000
BUILD GRANT 14343818

US 97 between Union Gap and Toppenish is a **major agricultural and freight corridor** in the Yakima Valley crossing through the Yakama Nation. WSDOT has recently completed the construction of roundabouts at the intersection of US 97 and McDonald/Becker Road and at the intersection of US 97 and Jones Road. WSDOT will construct an additional roundabout at the US 97/Lateral A intersection, currently planned for Summer 2025. WSDOT is submitting a BUILD grant application for the construction of three roundabouts, sidewalk, and trail sections at and between the intersections of US 97, SR 22, and Larue Road.



- **\$25M Invested**
- **\$38M to Finish**

Questions?

Randy Giles | Asst Region Administrator -
Design and Program Management
WSDOT South Central Region
gilesr@wsdot.wa.gov | 509.577.1626



Project Cost

\$3,200,000

City of Zillah

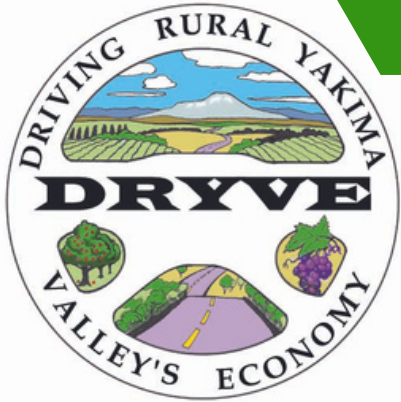
Cheyne Road Widening and Pedestrian Facilities

A critical road widening project on Cheyne Road to enhance pedestrian safety, particularly for Zillah Middle School students, and make it safer and easier for everyone who uses this highly traveled roadway, including: Yakima Waste Systems, Zillah School District buses, Borton Fruit, Monson Fruit, and countless tourists visiting the estate wineries in the Rattlesnake Hills AVA in Yakima County. By widening a quarter-mile section, the project creates separation between walkers, bicyclists, and heavy trucks using the important North-South T-3-FGTS freight route.

Questions?

Michael Eklund-Grayum | City Administrator
City of Zillah
mgrayum@cityofzillah.us | 509.829.5151 x224

Thank You



509.759.9781



@DRYVETRANSACTION



PO Box 1932
Yakima, WA 98907

Additional Projects of Importance

City of Toppenish
Jackson Street Extension

City of Toppenish
Toppenish Avenue Improvements

City of Sunnyside
I-82 Exit 69 Improvements

