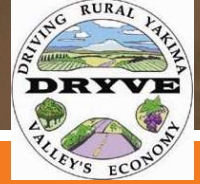


VINTAGE VALLEY PARKWAY EXTENSION

1ST AVENUE TO BUENA ROAD



Background

The City of Zillah has been committed to the complete Vintage Valley Parkway for years. In 2013, the Yakima Valley Conference of Governments (YVCOG), the metropolitan and regional planning organization for Yakima County, awarded regional Surface Transportation Program (STP) funding to Zillah to design the Vintage Valley Parkway. In 2015, YVCOG committed \$4,900,000 to the City for the needed improvements. Often, single source funding does not provide complete funding for a \$10,000,000 - \$11,000,000 transportation investment. This is the case with Zillah's Vintage Valley Parkway. As the designs were finalized it was apparent that more funding would need to be gathered for the project. The City has succeeded in obtaining grants and loans from other state, county, and regional funding sources, but remains \$6,468,031 short of fully funding their \$11,075,423 project.

Importance

- Reduces I-82 traffic between exits (part of the National Freight Network)
- Allows access to previously inaccessible commercial properties
- Connects residential and commercial development to the City's core
- Eases regional movement

Request

The City of Zillah is requesting \$6,640,000 or 59.95% of the future eligible project cost of \$11,075,423 from INFRA to construct the proposed project.

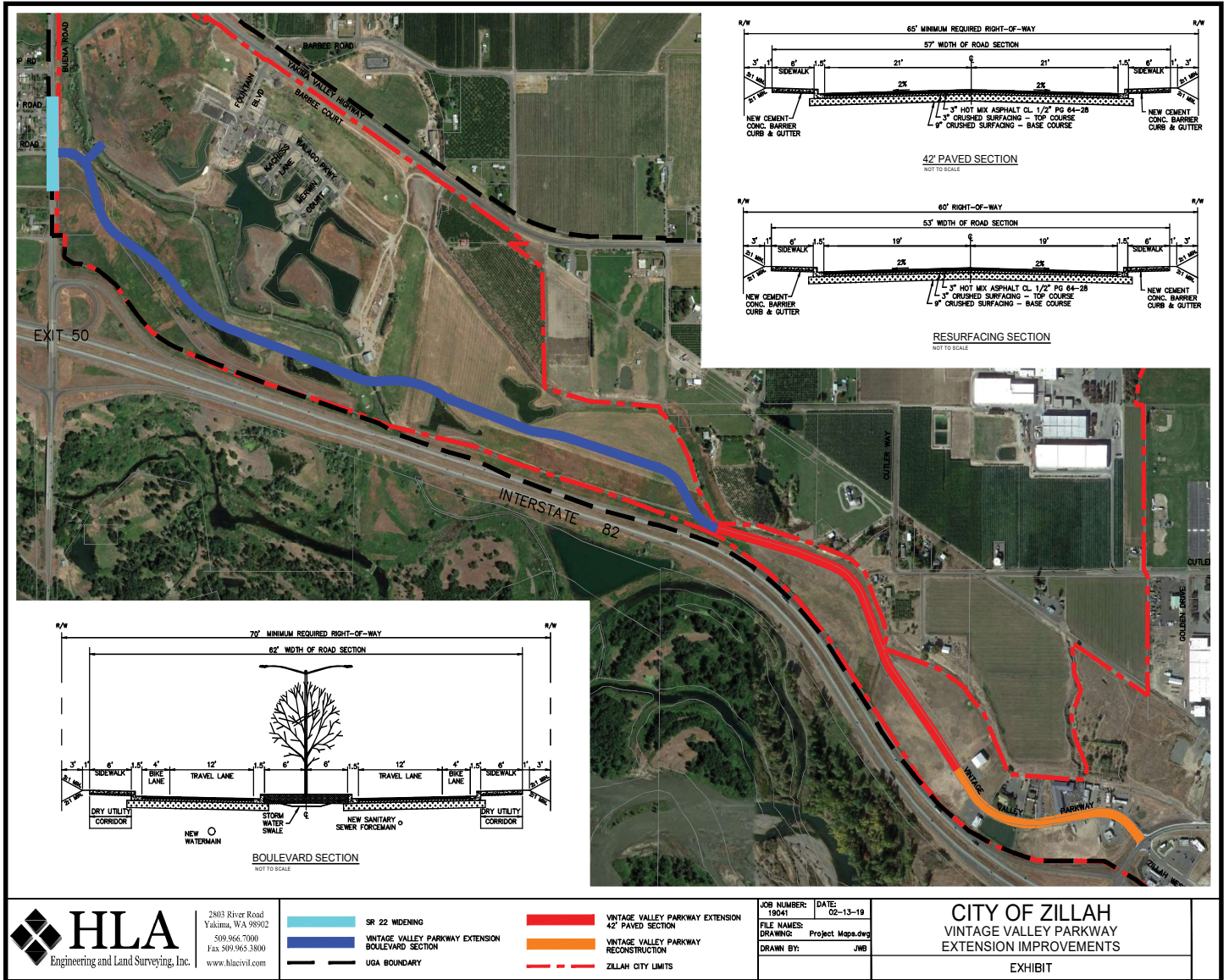


REQUEST \$6,640,000



Contact

Ardele Steele
City of Zillah, Director of
Planning and Community
Development
509-829-5151
asteel@cityofzillah.us



Activity	Schedule
Environmental Permitting Completed	February 2019
NEPA Begins	March 2019
Complete NEPA	July 2019
Finalize Right-of-Way Acquisition	August 2019
Publish PS&E	September 2019
Advertise for Bid	September 2019
Bid Opening	October 2019
Utility Construction	November 2019
Vintage Valley West Construction	February 2020
Vintage Valley Parkway Construction	June 2020
Buena Road (SR 22) Construction	November 2021

- ### Improvements
- Water and sewer extensions
 - SR 22 widening
 - Bicycle lanes
 - ADA-compliant sidewalks
 - Stormwater drainage
 - Center median
 - Street illumination
 - Pedestrian refuge
 - Planting areas